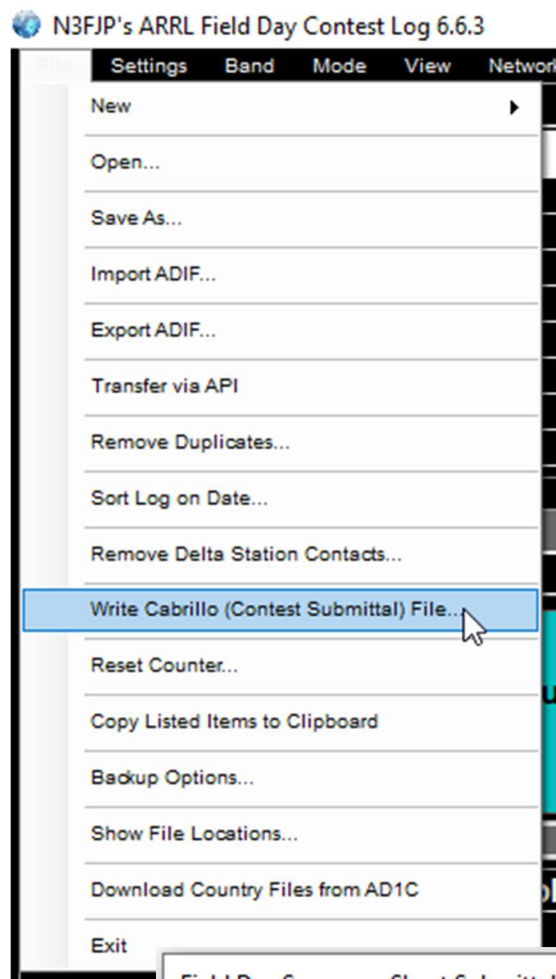


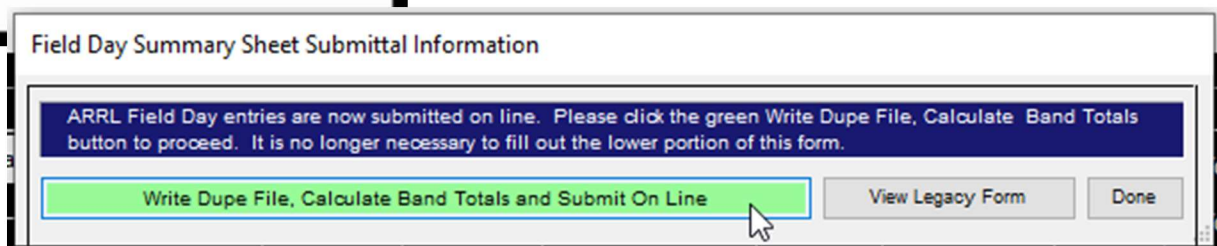
Submitting Your Home Field Day Operation for Aggregate Club Credit



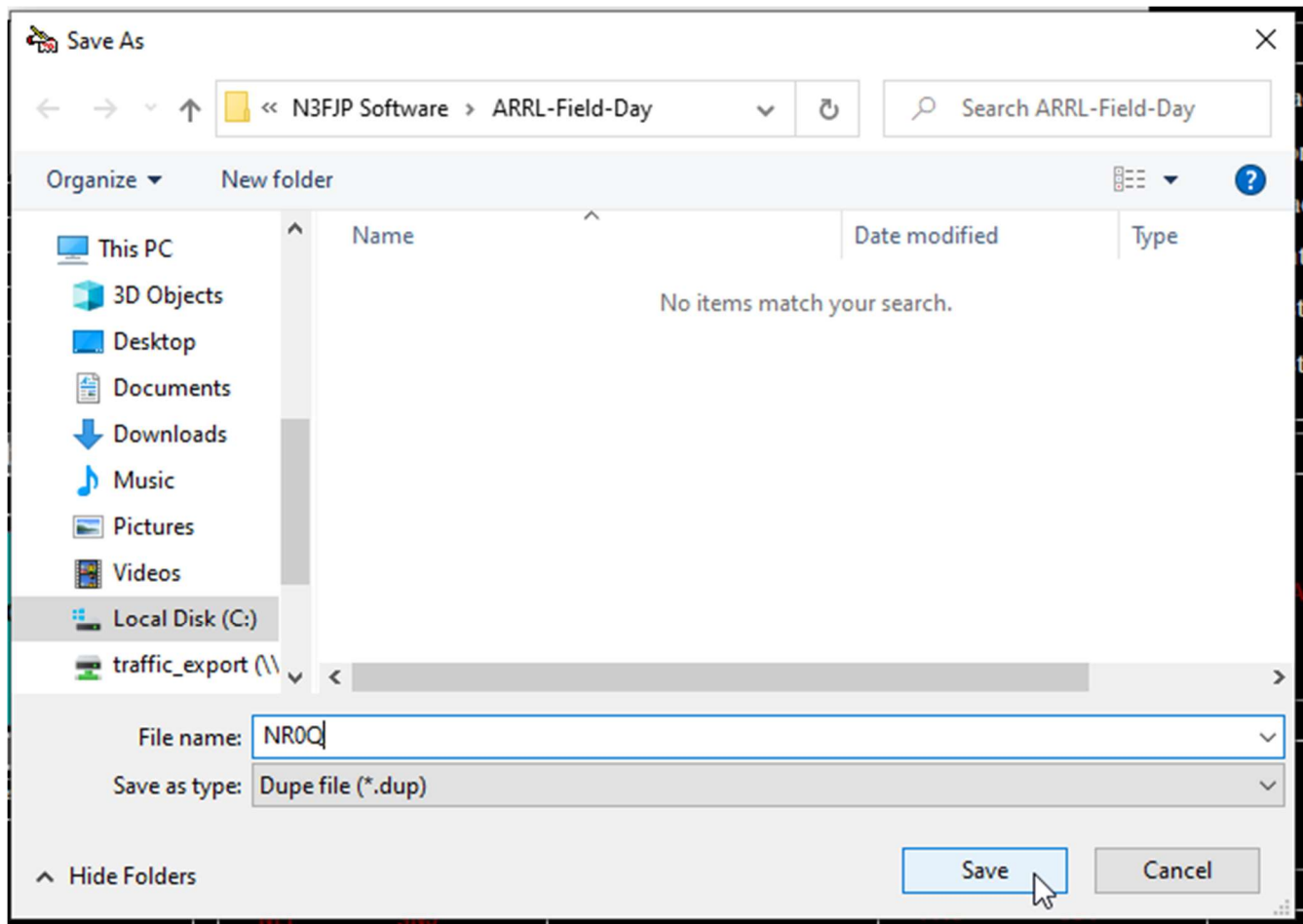
Using the N3FJP Field Day Logger makes this easier.

First you'll create a dup file of your Field Day Log, this step differs from other ARRL Contests that require the submission of a Cabrillo log file.

In the N3FJP Field Day Logger, go to File, and down to Write Cabrillo (Contest Submittal) File. This won't actually create a Cabrillo file but will show a dialog asking if you want to write a Dupe file. Click the Write Dupe File, Calculate Band Totals and Submit On Line button to continue.




Name your Dupe file and click save



A box will show your summary, you can close out of this and now go to the Field Day entry page at <http://field-day.arrl.org/fdentry.php>

← → ↺ https://field-day.arrl.org/fdentry.php 📄 ☆ 🛡️ ☰



FIELD DAY 2022

ARRL Home	Field Day Home	Field Day Resources	Field Day Locator	Rules	Entry Form	Entries Received	Results	Soapbox
-----------	----------------	---------------------	-------------------	-------	------------	------------------	---------	---------

2022 Field Day Entry

Attention! Entries for the 2022 Field Day are not being accepted until its start at 2022-06-25 18:00:00

Complete this form to submit your Field Day Entry to the ARRL for review and tabulation. You can access a help page by clicking on ⓘ next to an item on the form. **Note:** You can select documentation files for upload as you complete this form, or you can upload the documents at a later time. Each document can not be larger than 6 MB.

Call Used ⓘ GOTA Station Call ⓘ Location

Club or Group Name ⓘ (Type name to find and then select in existing list, or type complete name not on list.)

Number of Participants ⓘ Number of Transmitters in simultaneous operation ⓘ

Entry Class (check only one):

- ☐ A. Club or non-club group portable ⓘ
- ☐ B. 1 or 2 person non-club group portable ⓘ List of calls of operators:
- ☐ C. Mobile ⓘ
- ☒ D. Home station commercial power ⓘ
- ☐ E. Home station emergency power ⓘ
- ☐ F. EOC station ⓘ

Power Source (check all that apply):

On the webpage, enter your callsign that you used for your home operation, your section (Oklahoma) and for Club or Group Name, enter “Tulsa Amateur Radio Club” (without quotes).

Everyone has to enter this the same way for it to count. The entry bot will count TARC, Tulsa ARC and Tulsa Amateur Radio Club as 3 different groups. Continue filling out the entry with your class, power source, power multiplier and checking any bonus points you qualify for and upload your bonus point evidence (text of W1AW message, photos of your setup, photos of elected officials visiting, etc)

← → ↻ <https://field-day.arrl.org/fdentry.php> 📄 ☆ 🛡️ ☰

Power Source (check all that apply):
☐ Generator ☒ Commercial mains ☐ Battery ☐ Solar ☐ Other (list)

Power Multiplier (check only one):
☐ 5 watts or less and battery powered = 5x
☒ 100 watts or less = 2x
☐ More than 100W (will not be listed in the results)

Bonus Points claimed: Check each box as appropriate and include required proof of points with your submission. All bonus points will be verified at ARRL HQ and added to your score.

<input type="checkbox"/> 100% emergency power ⓘ	
<input type="checkbox"/> Media publicity ⓘ	Upload documentation: <input type="button" value="Browse..."/> No file selected.
<input type="checkbox"/> Public location ⓘ	
<input type="checkbox"/> Public information table ⓘ	Upload documentation: <input type="button" value="Browse..."/> No file selected.
<input type="checkbox"/> Formal message to ARRL SM/SEC ⓘ	Upload documentation: <input type="button" value="Browse..."/> No file selected.
<input checked="" type="checkbox"/> W1AW Field Day message ⓘ	Upload documentation: <input type="button" value="Browse..."/> No file selected.
<input checked="" type="checkbox"/> Formal messages handled ⓘ — No. 3	Upload documentation: <input type="button" value="Browse..."/> No file selected.
<input type="checkbox"/> Satellite QSO (automatically determined)	
<input type="checkbox"/> Natural power QSOs completed ⓘ	Upload documentation: <input type="button" value="Browse..."/> No file selected.
<input type="checkbox"/> Site visit by invited elected official ⓘ	
<input type="checkbox"/> Site visit by invited served agency official ⓘ	
<input type="checkbox"/> Educational activity ⓘ	
<input checked="" type="checkbox"/> Youth participation ⓘ	

Number of youth participants completing at least 1 QSO:

Total number of youth participants:

When you get to the Band/Mode QSO Breakdown, you can enter the number of QSOs you made on each band mode and upload your dupe sheet you saved earlier.

← → ↻ <https://field-day.arrl.org/fdentry.php> 📄 ☆ 🛡️ ☰

Total number of youth participants:

<input type="checkbox"/> GOTA bonus (automatically determined)	
<input type="checkbox"/> Submitted entry online (automatically determined)	
<input type="checkbox"/> Safety officer ⓘ	Upload documentation: <input type="button" value="Browse..."/> No file selected.
<input checked="" type="checkbox"/> Social media ⓘ	

Note: Bonus points for satellite QSO, GOTA QSOs and web submission will be automatically determined from info entered elsewhere on this form.

Band/Mode QSO Breakdown: Do not list GOTA QSOs in this section. ⓘ

Band	CW		Digital		Phone	
	QSOs	Pwr(W)	QSOs	Pwr(W)	QSOs	Pwr(W)
160m						
80m						
40m						
20m						
15m						
10m						
6m						
2m						
222						
432						
Other						
Satellite						

Upload band/mode calls list (Dupe Sheet or Cabrillo file): No file selected.

No file selected.

Now enter your name, callsign and email address and Submit Entry

← → ↺

🔒 https://field-day.arrl.org/fdentry.php

📄 ☆ 🏠 ☰

	Name	Call	CW		Digital		Phone	
			QSOs	Pwr(W)	QSOs	Pwr(W)	QSOs	Pwr(W)
1								
2								
3								
4								
5								
6								
7								
8								
9								
10								

Add a row

I/We have observed all competition rules as well as all regulations for amateur radio in my/our country. My/our report is correct and true to the best of my/our knowledge. I/We agree to be bound by the decisions of the ARRL Awards Committee. Submission of this form indicates my/our agreement with these statements. [U](#)

Name Call E-mail Address

You'll have an opportunity to enter comments using a link on the confirmation page.

Send comments or questions about this page to [ARRL Contest Manager](#).
Version: 1.10.0, Revised: June 21, 2022
Copyright © 2022 American Radio Relay League, Inc., All Rights Reserved

That's it! You've now entered your home Field Day operation for aggregated club score credit.

Do note that you can work stations that W5OK also worked at Field Day but if you operate from the W5OK stations at Chandler Park, you can not work W5OK for credit in either the club or your log.

Do also share any fun photos of your Field Day operation with us so everyone in the club can enjoy seeing what everyone else did.

Stay cool, hydrated and have fun!